

### FLEX HOSE WITH COUPLINGS



- *designed to withstand working pressure up to 150 psi; inside diameter 2"- 47"; max. vacuum -12 psi; environmental temperatures between -67 and 176 °F (for the standard pipe) consists of the several wear-resistant layers can be cut to any length to adapt to customer's needs, remains compatible with the couplings*

### FLANGED HOSE



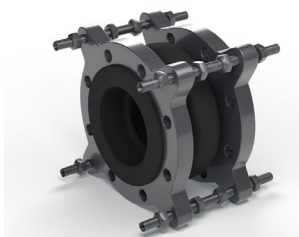
- *flanged hoses with the inside diameters 2"- 47" with different PCD to comply with the requirements of the modern equipment. The special design ensures reliable and tight contact to maximize economic efficiency for smooth operation*

### RUBBER BEND



- *bends 30 °, 45 °, 60 °, 90° with extra thick inner lining in the areas of the highest abrasive impact*

### LENS EXPANSION JOINTS



- *working pressure up to 232 psi This type of joint absorbs mechanical vibrations and compensates for linear expansion*

### RUBBER-LINED STEEL PIPE



- *working Pressure up to 290 psi*

### RUBBER-LINED SPECIAL PRODUCTS



- *the principal advantage of our rubber-lined steel products is their structural capacity and record-breaking resistance to external and internal factors, which helps to achieve maximal using efficiency*